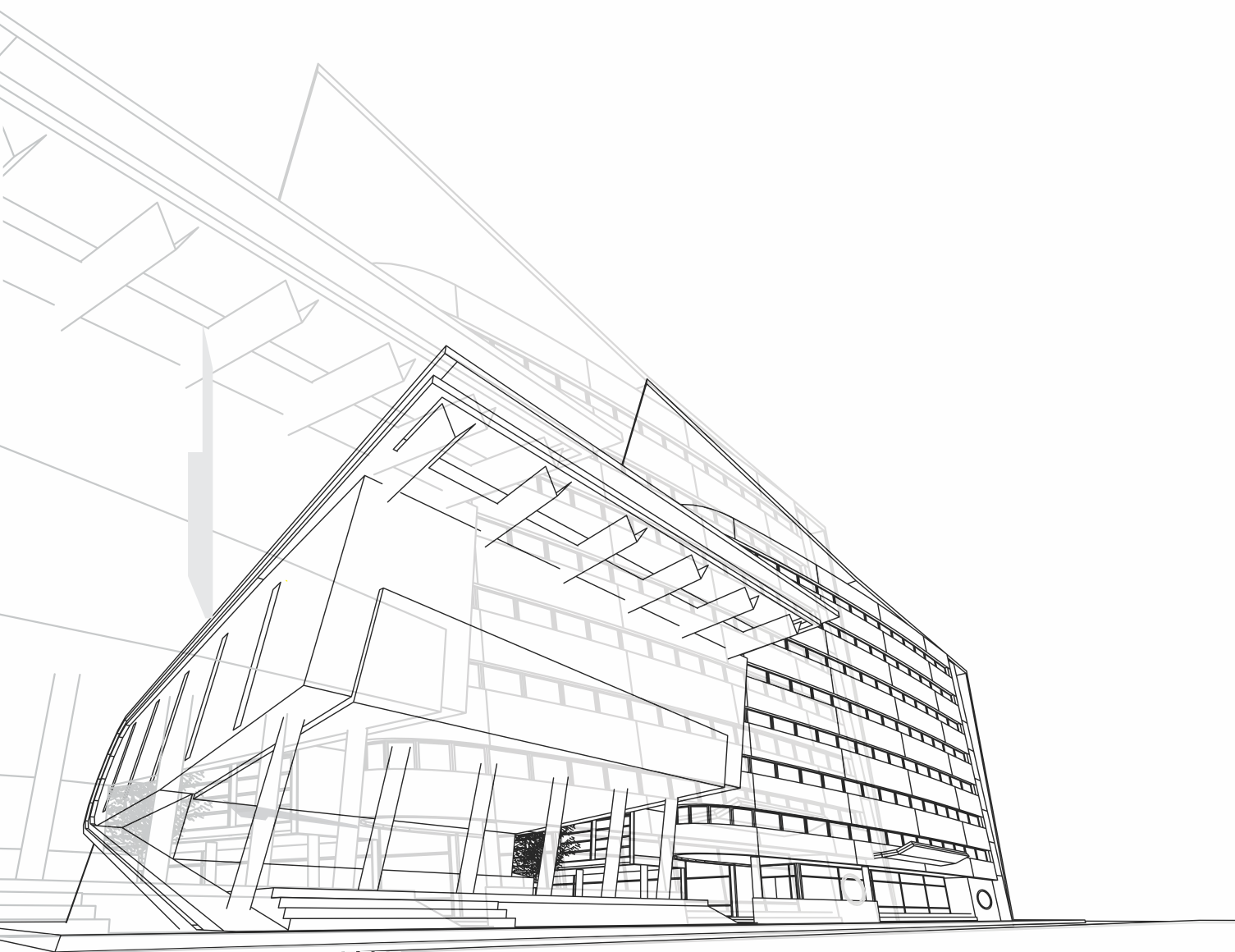


**"THE ROAD TO SUCCESS  
IS ALWAYS UNDER  
CONSTRUCTION"**



Satisfaction Matters

CONSTRUCTION, CONSULTANCY  
AND BEYOND





**“ THE ROAD TO SUCCESS  
IS ALWAYS UNDER  
CONSTRUCTION ,”**



**Mr. Arshad K.**  
Managing Director

“The industrial construction industry remains a fickle one. Here, if you have to stay afloat in the market you have to perform. When I joined the business in 2005 it was still in a nascent stage although it been 16-18 year. With a singular aim of the expanding our client base, marketing on war footing was undertaken. This led to increase in our customer base. Now we can boast of having major companies such as Idea, Nokia, Ericsson, Bharti Airtel, Frick India, Kingfisher, Nagarjuna Cement DRS Group Berger Paint Red Tape Anzo Control Pragati Coating Malhotra Cable as our clients and this list is constantly growing. From Industrial construction we have now expanded to school, hospital, public housing, warehouses, civil engineering and infrastructure products. These projects are spread all over India, showing how much we have grown over the years. We are now not only a well-known brand in the construction market but are respected by our peers also.... With each passing year if there is one thing I am sure of, it is that of the enormous strides the company has taken and will keep taking in the field of infrastructure construction.

“When the company was founded, the main aim was to provide quality services that met with customer's expectation with on time delivery of projects. After 20 years of being associated with the company, I can definitely say that the company has remained true to its motto "Satisfaction Matters. "Not only we have expanded into other spheres of construction business but we also have forged a lasting relationship with our customers. Keeping the future in mind, we intend to stick with the mantra of fulfilling the obligations of our customers on time and with the highest standard of work. We are going to move forward but we are never going to forget the humble beginnings and the guiding principle on which the company has grown.



**Mr. Vikash Jaiswal**  
Desk of Director

## KEY PERSONS



**Mr. Sushil Kumar Sharma**  
(Sr. Business Development Manager)

He is an accomplished Mechanical Engineer having B.E. (Mechanical) with more than 25 years experience in the fields of projects management. Having worked with prestigious organization in India. He is instrumental in furtherance organizational goals of sustainable business development aiming at continued and consistent growth.



## ABOUT US

**ATOZ Infra** Projects in one of the leading Consultancy and Construction Company based out of Bhiwadi with its branch office in Delhi having operations all over India. Founded in the year 1995 and established as a company in 2004, company has flourished and grown over the years providing unbeatable quality standards and timely delivery, employing over 950 people across various spectrums of the business.

**ATOZ Infra** enwrapped in industrial, commercial and residential sector, has been delivering output more than client's expectations with their timely delivery and quality standards. With the growing demand of industrial construction and warehousing requirement because of the high consumption demand, we need faster delivery with a full stop solution under one roof, because **ATOZ Infra** is able to fill that void, we have a growing customer base without losing the ones who are with us from the time of inception.

Starting from scratch of having only 1 customer, today we have more that 500 + satisfied customer. Because of our ethics, work culture, transparency and unbeatable services, 60% of the business is being derived from the word of mouth publicity. With the vision of anticipating our services across the globe, we also aim to expand ourselves to other horizons of the Industry, to provide better solutions at unbeatable prices.



## MISSION

ATOZ Infra is on a mission to provide excellent services and product to enable customer get value for each penny. Emphasis is on creating a platform where we understand customer's requirement better than them and our solutions provided are best possible. ATOZ Infra is on a mission to blend exuberance of youth with maturity of experience to give perfect services.



## VISION

We envision ourselves to be a leader in designing and construction of high tolerance and impact free buildings, satisfying customers with efficient & innovative design that are built with the latest technology in construction. ATOZ Infra is committed to create a brand in industry where it is considered synonyms of ethics, quality and excellence in performance. ATOZ Infra will bring innovation in designs and products to improvise the performance in the construction industry.



## QUALITY POLICY

Execute project maintaining the highest quality standards systems and safety standards as per global norms. To provide best services and solutions that reduces the long term maintenance cost of the client and to ensure efficient plus timely delivery of the project.



## PERSONALIZED TECHNICAL SERVICES TO CUSTOMERS

Knowledge sharing principles and processed for best selection of product and available technology by customer. This include requirement assessment of customer, meeting quality standard of services, evaluation of customer requirement and satisfaction economically.

## YOU CAN DEPEND ON US

The combination of vision, Innovation, precision & manpower has made us strong. Our Customer appreciate our solid reliability & proverbial flexibility when it comes down to supplying even the most complicated solutions economically & on schedule.

## OUR CONTINUITY

Continuity also demands vision. Vision is the basis for the Endeavour & solutions that are hardly possible otherwise. Our visionary potential can be found in our technical team.



## OUR USP'S:

- One of the few companies In India to heavily invest on most Experienced team to handle all your needs.
- Timely delivery, quick service, best quality and unbeatable prices.
- Third party audit of erection.
- One stop solution that saves time, energy and bring more efficiency in work.
- Ethical values in marketing has enabled higher customer retention.
- Highly experienced erection procedure, team and third party certification makes erection hassle free and managed in time lines.



# PROJECT EXECUTION METHODOLOGY



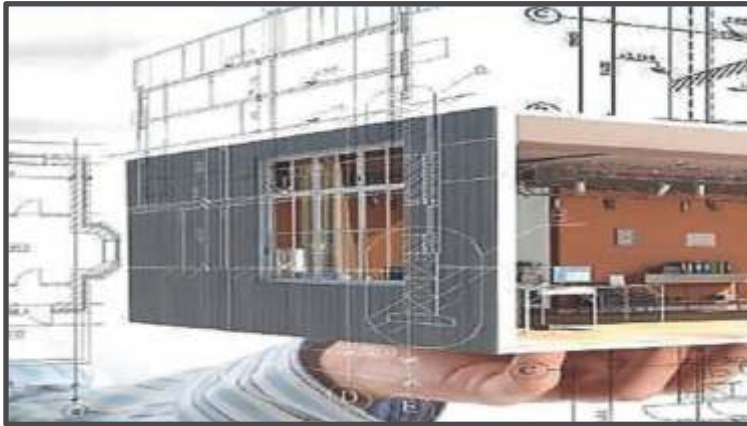


# SERVICES WE OFFER

## Pre-Construction Services

(Conceptualisation, Development services, preparation of HSE Management, Project subsidies approval, Land Acquisition Consulting)

1. Civil Construction
2. Pre Engineered Building
3. Electrical Works
4. Design and Detailed Engineering Services
5. Industrial Flooring
6. Fire Fighting Services
7. Interior Work



# DESIGN & DETAILED ENGINEERING SERVICES

The engineering department uses the latest versions of internationally renowned industry-standard 3D and 2D software for designing and detailing. **ATOZ Infra** upholds its position at the cutting edge of the industry due to its commitment to quality and customer satisfaction. Skilled structural engineers using the very latest in computerized engineering design and detailing systems permit the selection of the most economical accurate and efficient framing and cladding systems.

The Design / Engineering Department is fully computerized, utilizing the latest software package to enable them to produce the most economical structures in the shortest time possible. The software packages most frequently used are

## CORE



Bureau of Indian Standards IS-800, IS-801, IS-875 & IS-1893(BIS)



American Iron and Steel Institute (AISI)



American Institute of Steel Construction (AISC)



Metal Building Manufacturers Associations

**STAAD.Pro**

**Autodesk**



**DRAWINGS**



**URBAN PLANNING**



**TENDER AND BOQ**



**PLANNING**



**DETAILED ENGINEERING DESIGN**



**ENVIRONMENTAL PLANNING**

# CIVIL CONSTRUCTION

Our extensive range of services includes:



**FOUNDATION**



**EXCAVATION & GRADING**



**BUILDING PADS**



**UNDERGROUND UTILITIES**



**ROADS & PARKING AREAS**



**EROSION CONTROL**



**SIDEWALKS & CURBS**



**BOUNDARY WALLS**

From Interstate work, to resurfacing local streets and parking areas, to complete site development services for GCs and developers, ATOZ Infraprojects provides high-quality results at competitive prices, backed by decades of proven experience. Our reputation for excellence was built by providing high-quality, cost-effective contracting services to the public and private sectors. For years, the foundation of our success has been striving for complete customer satisfaction in every aspect of our work. We invite you to experience this high level of customer service, starting with a prompt review and competitive bid on your next project

# CIVIL CONSTRUCTION

Our extensive range of services includes:



# CIVIL CONSTRUCTION

Our extensive range of services includes:



# PRE ENGINEERED BUILDING

## PEB OR STEEL STRUCTURE - WAREHOUSES



# MANUFACTURING UNIT



Satisfaction Matters

CONSTRUCTION, CONSULTANCY  
AND BEYOND

## Pre Engineered Buildings

India is a land of opportunities and industrial development. Pre-engineered building has risen in market share due to various reasons such as speed, economy and quality. Even after so many years of pre-engineered buildings in India, there is still a gap in a perfect blend of economy, quality, speed and ethics.

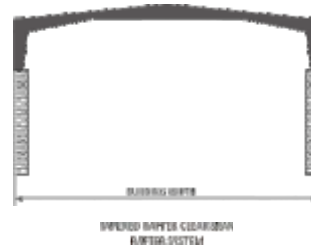
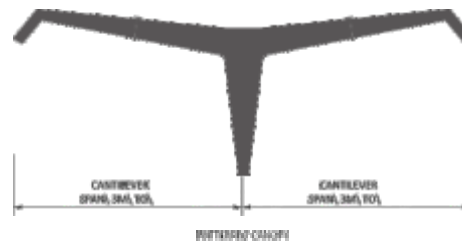
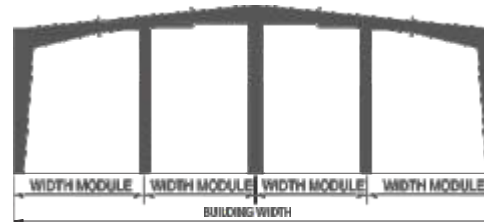
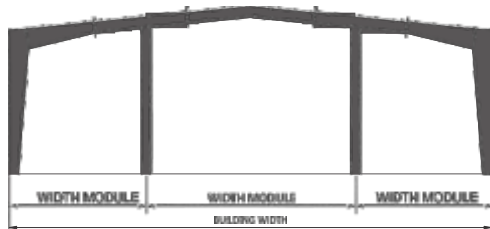
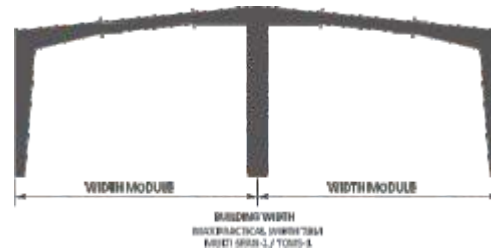
ATOZ Infra-Projects wishes to create their own mark by rising to a level of expectancy of market. They acquire infrastructure and experienced man power to fulfil their dream of making a mark into all types of industrial construction.

ATOZ knows that to reach perfection they should have the best man power and best infrastructure available in any PEB company.

To reach their target of achieving both they have their associations with the most leading brands of PEB in India, to provide the full stop solution in any part of the country



# FRAMING



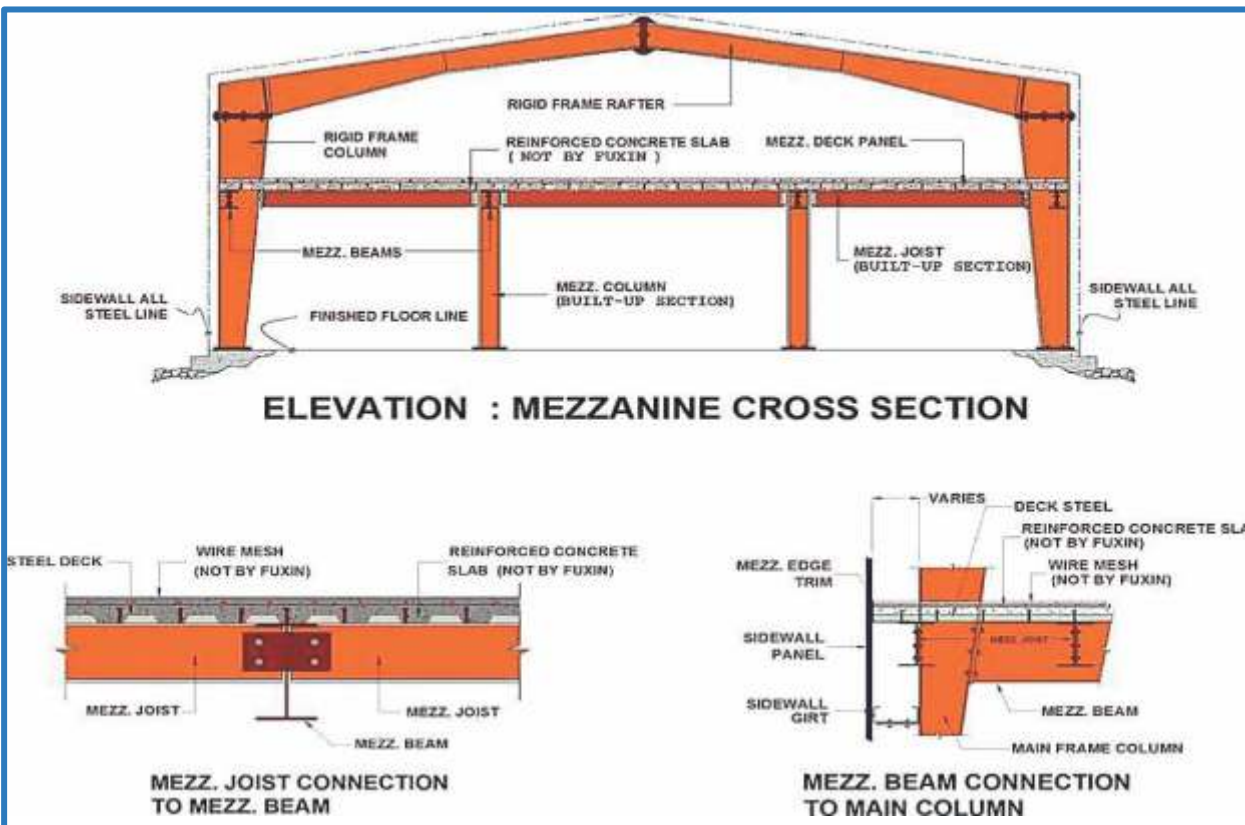
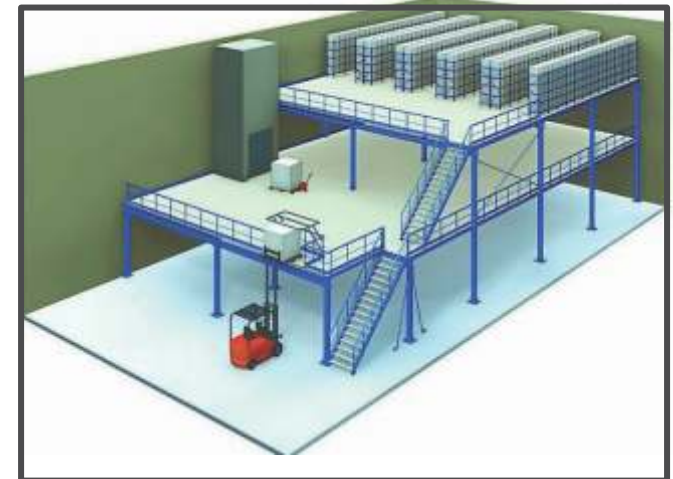
Pre- Engineering buildings are designed & Constructed in variety of Frames to meet specific project requirement of client, for maximum utilization of space with excellent strength and highest safety standard. Most commonly used framing system are shown



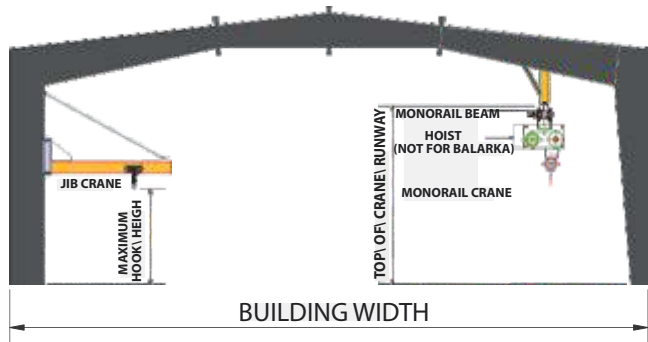
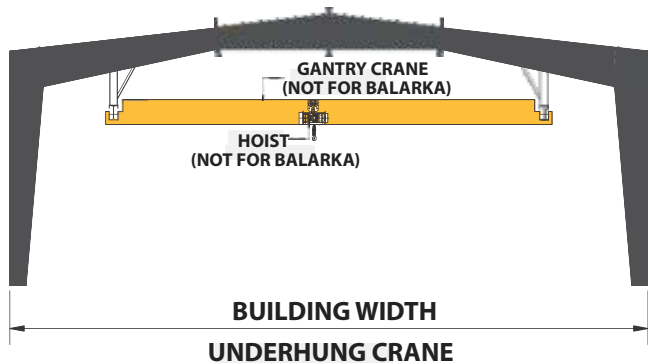
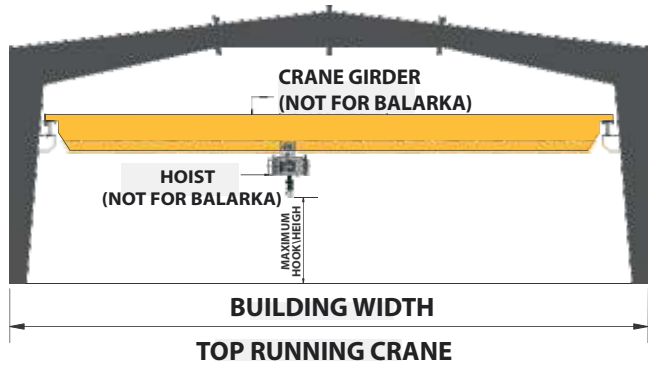


# MEZZANINE SYSTEM

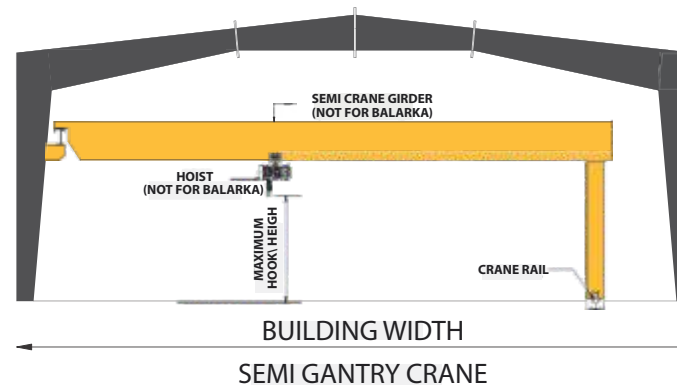
Intermediate mezzanine floors are possible in metal buildings. Mezzanine floors can be provided in complete or partial area in pre-engineered buildings to suit loading requirements for office and storage. Mezzanine floors consist of steel decks, supported by joists framed to the mezzanine beams. Mezzanine main beams normally run across the width of the building and are located under the main rafters while joists run parallel to the length of the building, the top flange of the joist fits perfectly below the top flange of the mezzanine beam. The economy of the mezzanine floor is affected by the applied load and support column spacing. Multilevel equipment platforms, catwalks, staircases etc. can be accommodated, if complete data is available.



# CRANE



ATOZ Infra Provides Design for Pre-Engineered Building of Crane system like EOT, Monorail, Underhung and Other Device such as conveyer. Balarka Scope involves supply of Rafter Bracket and crane runway beam that support the crane system.



## Our Turnkey Services

- 33 KV, 11 KV Sub-Stations
- Cable Laying In Trench Or In Ground
- Cable Jointing And Termination
- Insulations Testing of Electrical Equipments
- Switch Boards & Switch Gears
- Earthing & Earth Grids
- Electrical Design & Testing
- Installation Of LT & HT Panel
- Installation Of CCTV System
- Fabrication Of MS Structure For Machine
- Stand, Tray, Fan Support, ETC
- Street Light Pole Installation
- Industrial Wiring
- Lighting & Power
- Erection of Perforated Tray
- Ladder Type Tray
- Electrical Instruments
- PLC & SCADA Wiring
- Data Cabling & IT Works
- Solar Project
- Lightning Arrester Installation
- Service Maintenance & Testing
- Capacitor Banks



# ELECTRICAL WORK



# PHOTOS OF OUR EXECUTED WORK



# FLOORING SYSTEM

1. Industrial Flooring:
2. Concrete Flooring
3. Super Flat Flooring
4. Steel Armour Joints
5. Floor Hardening Systems
6. Polished Concrete Systems
7. SFRC Jointless Flooring
8. Floor Repair and Restoration



**INDUSTRIAL FLOORING**



**CONCRETE FLOORING**



**SUPER FLAT FLOORING**



**STEEL ARMOUR JOINTS**



**FLOOR HARDENING SYSTEM**



**POLISHED CONCRETE SYSTEMS**



**SFRC JOINTLESS FLOORING**



**FLOOR REPAIR & RESTORAT**

## FIRE FIGHTING

ATOZ Infra has made a commitment to save the lives of fighters around the globe by producing products that assist in rehabilitation on emergency scenes. There have been multiple studies conducted that evaluated the causes of injuries and deaths of fighters as well as the amount of money spent on treatment and replacement due to lost time. Heat Seeker Technology & Design, LLC is making rehab a tactical consideration.



## INTERIOR WORK

- Painting and Polishing Work
- Wood Work
- POP Work
- Ceiling Work
- Glass Work
- Office work station
- Furniture Partiti



# LIST OF EQUIPMENTS & MACHINERIES



Batching Plants with Concrete pump (1m3 Capacity)	2 Nos
Loader	3 Nos
Dumper	9 Nos
Earth Compactors	10 Nos
Cube Test Machines	8 Nos
Tractor/ Trolley/ Water tanks	4 Nos
Cube Moulds	100 Nos
Concrete Mixer Machines	20 Nos
Monkey Lifts	15 Nos
Tower Hoists	2 Nos
Bar Cutting machine	14 Nos
Bar Bending machines	8 Nos
Modern scaffolding	1 Lc Sqft
D. G. set Small/ Big	4 Nos
Dumpy Level	4 Nos
Theodolite	2 Nos
Dismantling Hammer Machine	10 Nos
Slit Testing M/c	12 Nos
All Lab. equipment's	Yes
Compaction M/n	2 Nos
Transit Mixers	4 Nos
WMM Plant	2 Nos
JCB – 2 nos. Stream Curing Plant	2 Nos
Vibrators	25 Nos
Monkey Lift	6 Nos
Tippers	10 Nos
Motor grader	4 Nos
Vibratos rollers	1 Nos
Tandem Vibratory rollers	2 Nos
Total Station	2 Nos
Auto Leveller	20 Nos
Jack Hammer	10 Nos
Air compressor	4 Nos





## HEALTH & SAFETY

We are dedicated to providing a safe environment for our employees to work in. Adherence to various rules and regulations laid down by the government and going even beyond them so that our employees remain healthy and free from ailments.

Regular health check-ups are organized for the employees. Not only that, all the employees are provided with various protective gears for onsite jobs. These gears such as helmets, masks, safety harness etc, meet the various standards stipulated and regularly examined to check for any wear and tears and are regularly replaced with new gears. Keeping in line with the vision of Swachh Bharat Abhiyan, we try to maintain the cleanness of the surroundings of the job site. We also provide eco-friendly sanitation solutions for employees at the work site.

We also follow the rules and regulations regarding environmental safety. An environmental audit is carried out for most of the sites. Every order of the government, court or NGT in regards to pollution or environmental production is strictly adhered with.

# CEREMONY BHOOMI PUJAN



# OUR COMPLETED PROJECTS



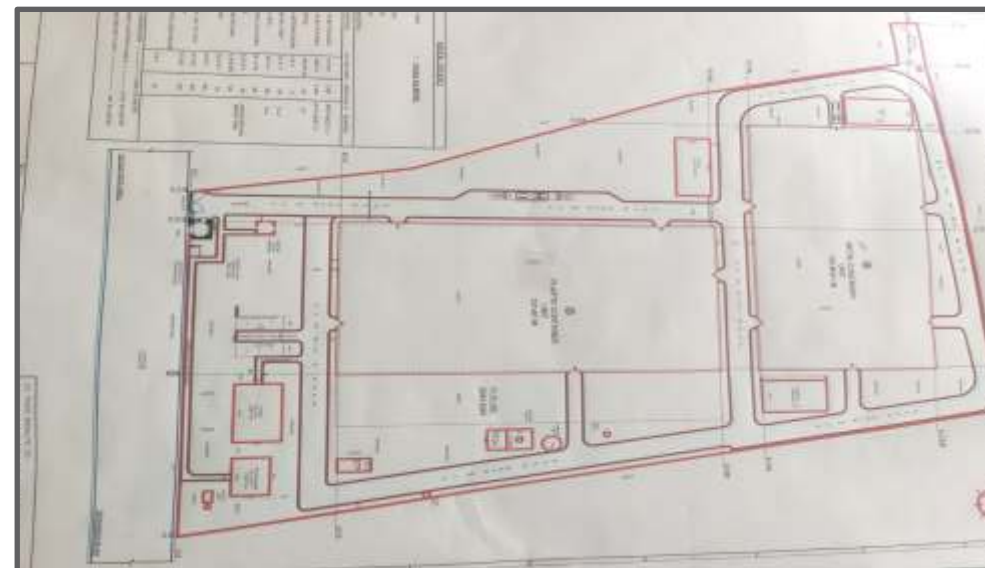
**RED TAPE INDIA (MIRZA INTERNATIONAL LTD.) - KANPUR**



**LEADING METALLOYS, KAROLI, BHIWADI**



**MALHOTRA CABLES PVT LTD, KAHARANI, BHIWADI**



**BERGER PAINT - SANDILA LUCKNOW**

# OUR COMPLETED PROJECTS



**LEADING METALLOYS, KAROLI, BHIWADI**



**ANZO CONTROLS PVT. LTD. - GHILOTH, (RAJ.)**

# OUR COMPLETED PROJECTS



**INDUS PHARMA PVT.LTD**  
Ind.Area- Ghiloth (Raj.)



**TARUDHAN VALLEY**  
Golf Resort Manesar (Hr.)



**TARUDHAN VALEY Golf Resort Manesar (Hr.)**

# OUR COMPLETED PROJECTS



**ELCINA ELECTRONICS MANUFACTURING CLUSTER, BHIWADI, RAJASTHAN, KHUSHKHERA**



**DHOOT TRANSMISSION PRIVATE LIMITED, MANASR SECTOR-8, GURGAON**



**PRAGATI COATINGS - BAWAL, (RAJ.)**



# OUR COMPLETED PROJECTS



**RESORT (LEMON TREE PREMIER JIM CORBETT) - UTTRAKHAND**



**MAHLOTRA CABLES (Unit 2) - MANESAR (Hr.)**



**HIND TERMINAL - PALWAL, (HR.)**

# OUR COMPLETED PROJECTS



**T & T WAREHOUSES - TAURU, (HARYANA)**



**PRECI TURN PVT. LTD. - FARIDABAAD, (HR.)**



**AGGARWAL MOVERS - PALWAL, (HR.)**





# OUR COMPLETED PROJECTS

atoz™

Satisfaction Matters

CONSTRUCTION, CONSULTANCY  
AND BEYOND



**BIHANI MANUFACTURING - BHIWADI (RAJ.)**



**SHREE KRISHNA TOWER - NEEMRANA, (RAJ.)**



**HITESH HERBOTECH - NEEMRANA (RAJ.)**



**MPS SCHOOL - BHIWADI, (RAJ.)**

# OUR COMPLETED PROJECTS



**EURO FOOTWEAR PVT. LTD. - KANPUR**



**MOTHESON K-AIR - BHIWADI (RAJ.)**



**ORIENT CRAFT - BHIWADI, (RAJ.)**



**RANI POLYMERE - MANESAR, (HR.)**

# OUR COMPLETED PROJECTS



**AVALON ROSEWOOD - KHUSHKHEDA, BHIWADI (RAJ.)**



**NCL - HYDRABAD, (AP.)**



**MYSTIC GREENS - ALWAR, (RAJ.)**



**TRUTH INDIA - SAHJAHAPUR, (RAJ.)**

# OUR COMPLETED PROJECTS



**CONTINENTAL PRAGATI - BAWAL (Hr.)**



**KAYNES TECHNOLOGY - MANESAR, SECTOR 4,  
GURUGRAM**



**RAF STATIONARY MFG CO. SECTOR-85,  
NOIDA, UTTAR PRADESH**



**AVALON ROSEWOOD - KHUSHKHEDA, BHIWADI (RAJ.)**

# CORPORATE SOCIAL RESPONSIBILITY



Satisfaction Matters

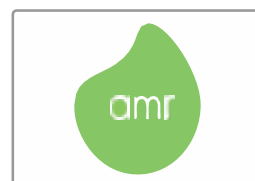
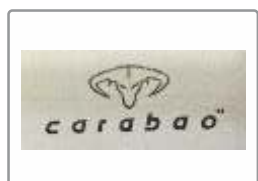
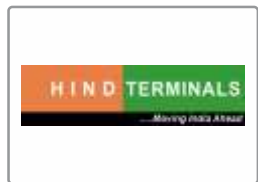
CONSTRUCTION, CONSULTANCY  
AND BEYOND



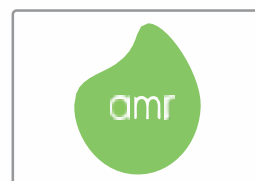
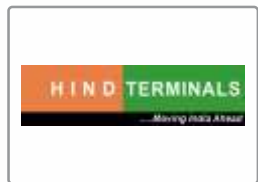
The **ATOZ Infra** Is Involved in various social activities. It has been associated with the NGO Astha for years and has been providing education to under privileged children through it.

It also recently undertook major renovation of the building that housed the school ran by the NGO. Other NGO the Group has been associated with is Mogli, where all the education needs and meals of the children are sponsored by the **ATOZ Infra**. Other than this, plantation drive has been undertaken by the group on the occasion of World Environment Day (5 Jun).

# OUR VALUABLE CLIENTS



# OUR VALUABLE CLIENTS





atozinfraprojects.com

Follow us



### **ATOZ Infraprojects Pvt. Ltd.**

Corporate Office:- A-102, first floor, Ganpati Plaza, Bhiwadi, Alwar-301019 (Rajasthan)

Registered Office:- C-141, Lower Ground, Kh. No. 279, Chattarpur Enclave, Phase-II, New Delhi-74

Email Us:- [atoz.bdm@gmail.com](mailto:atoz.bdm@gmail.com) | [info@atozinfraprojects.com](mailto:info@atozinfraprojects.com)

Contact:- 01493-220585 | S.K. Sharma +91-9813727884 | +91-9810226886 (BDM)

INDIA